

***Shapes version 1.0***

***Users Manual for  
Windows, Macintosh  
and Unix Platforms***

***September 2000***

# Table of Contents

---

Toolbar Menus	
File	3
Saving and Loading	
Edit	4
Features	4
Help	6
Object Editing	
Editing from the Main Modeling Window	
Shape	7
Color	8
Polygon Mode	8
Editing from the Object Edit Box	
Sliders	9
Shading	10
Outlines	10
Copy Menu	10
Link Menu	11
Global Editing	
Sliders	13
Background Color	13
All Object polygon modes	13
All Object shading modes	14
Animation	15

# Toolbar Menus

---



The Toolbar consists of five options:

1. The File menu allows you to open, save, and print\* your work, or quit the application.
2. The Edit Menu is used to manipulate the workspace and reset data.
3. The Features Menu adjusts the actual representation of the objects.
4. The Help Button turns on the floating online guide.
5. The About Button displays information about the current version of Shapes.

## **File Menu**

The file options are Open, Save, Print\*, and Quit.



### **Saving**

You can save your work and reload it at a different time. To save your work, hit the Save button in the file menu. You will be asked what to name the file. You may enter up to 12 characters for the filename. If the file already exists, you will be asked if you wish to overwrite the file. The new file will be placed in the same directory as the Shapes application, and will consist of all of the current modeling data and all of the current animation data. (for more on animation, see Page 15)

When you want to open up your saved file, there are two requirements. (1) The file must be in the same directory as the Shapes application. (2) You must know the filename of the file you wish to open. Once these two requirements are met, press the Open button in the file menu. Then enter in the name of the file. If the filename requested cannot be found or opened, an error message will display. Otherwise, you will be presented with an option to load the Model in the file, the Animation information, or both. In most cases, you would likely want to load both the model and animation.

### **Print (Windows and Unix only)**

You can export the current 3d display window into a postscript printer file by pressing the Print button in the File menu. The postscript file will be created as “shapes###.ps” where ### represents a number starting from 0 and incrementing every time Print is pressed. The application will report the completion of the file and output the filename to the screen. The postscript file can be run through a postscript reader such as Adobe Acrobat Distiller or Ghostscript to view and print the file.

### **Printing at SDSC**

When using the program at the San Diego Supercomputer Center, the postscript file will automatically be sent to the color printer “Prism” when the Print button is hit. Please check with an appropriate representative to pick up your print, and please do not hit Print more than once for each image to be printed.

### **Quitting the application**

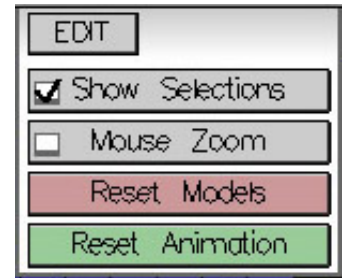
To exit shapes, hit the Quit button in the File menu or hit the Escape key on the keyboard. A dialog box will appear asking to confirm that you wish to quit the program.

\*printing is available on the Windows and Irix platforms only.

# Toolbar Menus

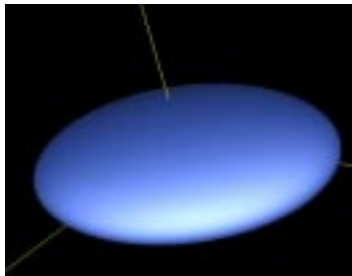
## Edit Menu

The edit options are Show Selections, Mouse Zoom, Reset Models, and Reset Animation.

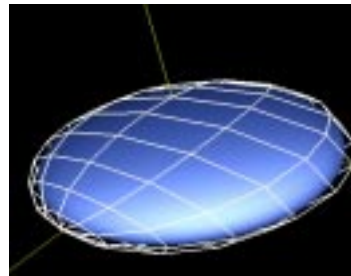


## **Show Selections**

This feature is on by default, and highlights a particular shape being worked on with a wireframe bounding box around the shape. This helps identify which object is being worked on when multiple objects exist in a scene. Clicking the Show Selections button in the Edit menu will toggle this feature on or off. This feature can also be toggled using the “Show/Hide Outlines” box in the Object Edit box. (see Page 4: Show Selections)



**Selections Hidden**



**Selections Shown**

## **Mouse Zoom**

By default, the left mouse button rotates the 3d scene, while the middle mouse button zooms in and out of the scene. By turning on Mouse Zoom in the Edit menu, the left button will become the zoom button and the middle button will rotate the scene. This feature allows for the full range of viewing using one-button mice, such as on the Macintosh platform. Alternatively, the “r” key on the keyboard will restore the left mouse button to the rotate function and the “s” key will restore the mouse button to the zoom function.

## **Reset Models/Animation**

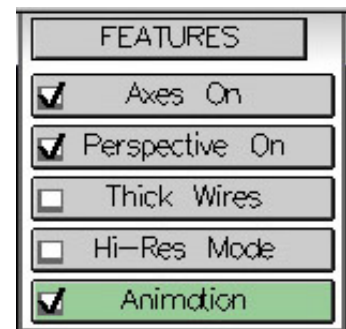
The Reset Models button restores all the default values for the modeling palette. This does not clear any data in the animation palette. The Reset Animation button only appears if the Animation palette is active, and clears all data in the animation palette but leaves the modeling palette intact.

## Features Menu

The features menu options are Axes On, Perspective On, Thick Wires, Hi-Res Mode, and Animation.

## **Axes**

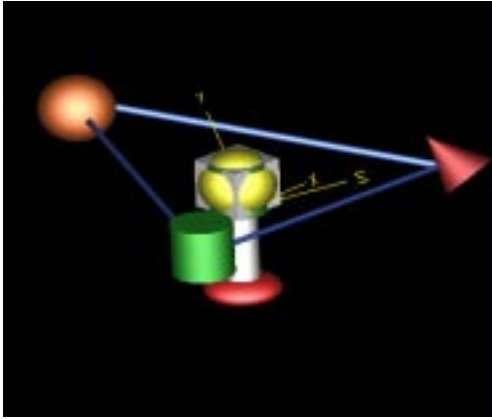
By turning on the axes, you can get a better view of the placement of the models in relation to the 3d space. The X, Y, and Z axes are placed in the positive direction from the center. Axes can be toggled on or off using the Axes On button in the Features menu.



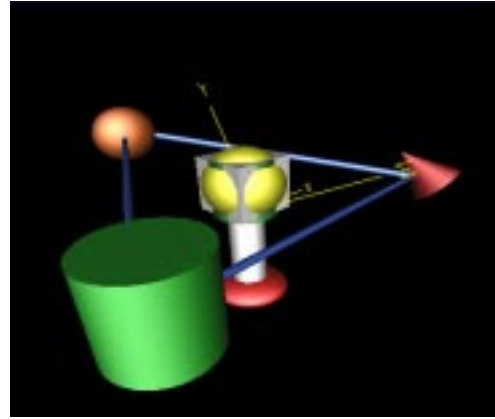
\*printing is available on the Windows and Irix platforms only.

# Toolbar Menus

---



**Perspective Off**



**Perspective On**

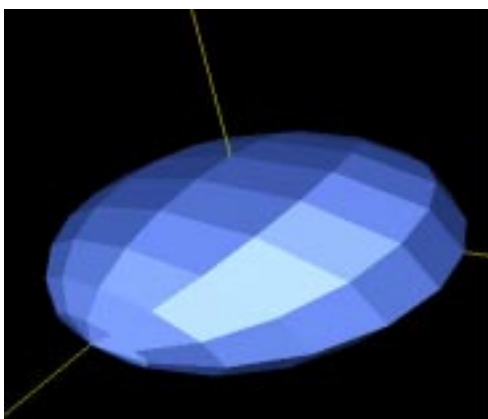
## Perspective

On by default, Perspective toggles on and off with the Perspective button in the Features menu. When perspective is off, the projection is set to orthographic. The difference: when perspective is on, objects that are farther away appear smaller towards the horizon. Having perspective on gives a representation more accurate to what our eyes see.

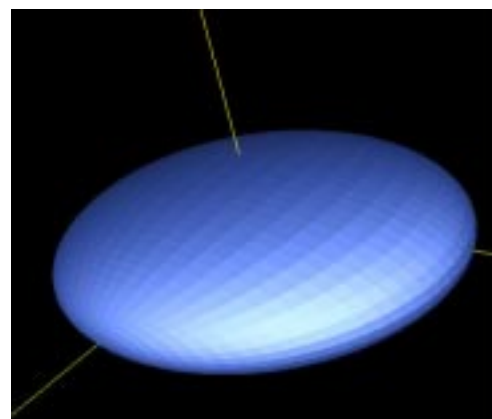
## Hi-Res Mode

Shapes that appear to be round consist of multiple facets that form the structure of the object. The greater the number of facets that make up a round object, the smoother it looks. However, the more facets that an object has, the longer it takes for the computer to draw it to the screen. Hi-Res mode is a mode that allows you to work with more facets for each polygonal shape, improving object appearance. By default, Hi-Res mode is off in order to maximize computer performance.

Below are examples of the same spherical object with Hi-Res mode off and Hi-Res mode on. Notice the number of patches in each mode.



**Hi-Res Mode Off**



**Hi-Res Mode On**

## Animation

An advanced feature, Animation allows you to generate two sets of models and have them morph between each other. This is off by default and is covered more extensively on Page 15.

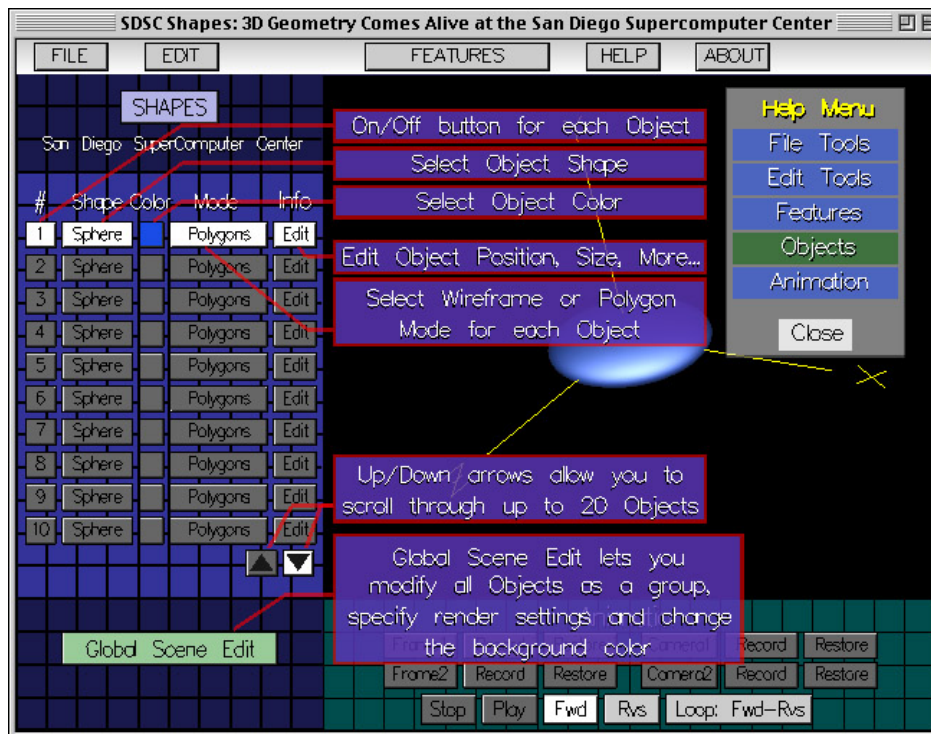
# Toolbar Menus

## Help Menu

The Help Menu button turns the floating Help Menu on or off. The Help Menu will change based on the options being chosen by the user. For example, in the main window, the Help Menu has options for each of the main tools: File, Edit, and Features, along with help information for the Object items. If Animation is on, an Animation option appears in the Help Menu as well. If the user is editing an object's color, the Help Menu changes to just an option for the Color Menu.



Clicking on one of the Help Menu choices brings up a set of overlays that describe the feature or features and the usage. In the figure below, the Objects option is selected in the main window, describing the various features of how to manipulate objects from the main screen.



# Object Editing

Up to 20 objects can be created to produce one set of models. Each object has its own color, shape, polygon mode, and location and orientation settings which can be independent of the other objects in the scene. These objects can be manipulated from the main object palette as well as from an object edit menu that can be accessed from the main object palette.

When starting the Shapes program, only object # 1 is active and objects 2 through 20 are off. Every object is a white sphere by default.

## Editing from the Main Object Palette

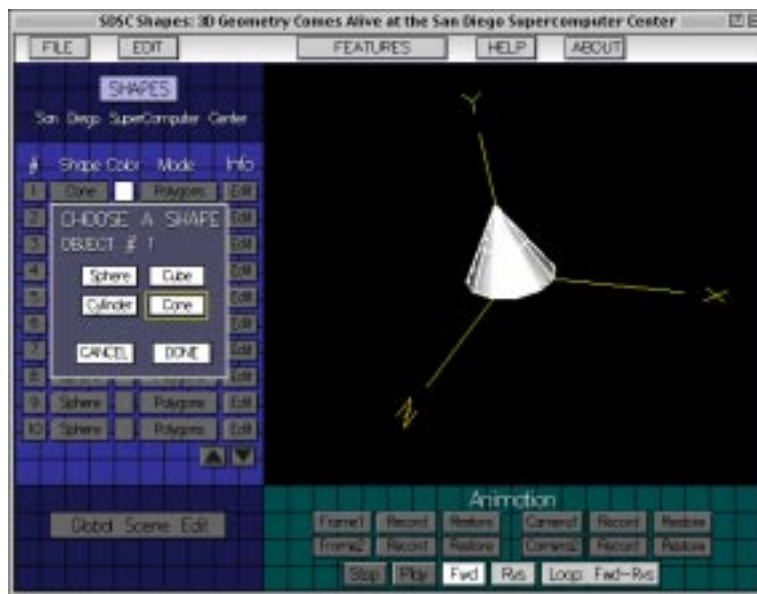


### Turning objects on and off

Clicking the number of the object turns it on or off. When the object is on, the button with the object number is white and all of the buttons on that row are available. When an object is off, the object button is grayed out and the remaining buttons for that object are grayed out and unavailable.

### Editing the Primitive Shape of an Object

The second button in an object's row of buttons describes the primitive shape of the object, which can be one of Sphere, Cube, Cone, or Cylinder. Clicking the shape name brings up a dialog box showing the available shape types. A yellow box is drawn around the name of the currently chosen shape. If Show Selections is active, a wireframe highlight is drawn around the object in the 3d scene. Click Done when satisfied with the new shape, or Cancel to revert to the last confirmed shape.



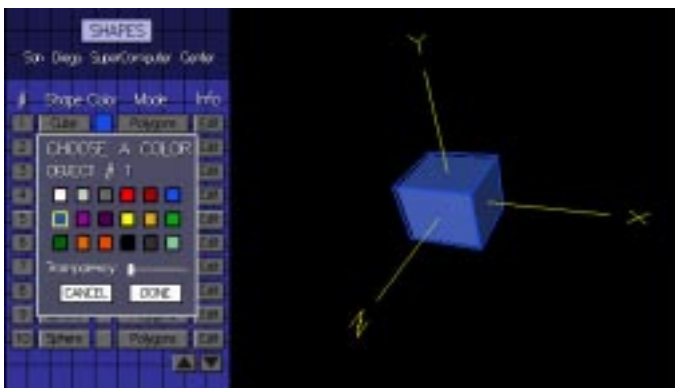
# Object Editing

## Editing the Color of the Object

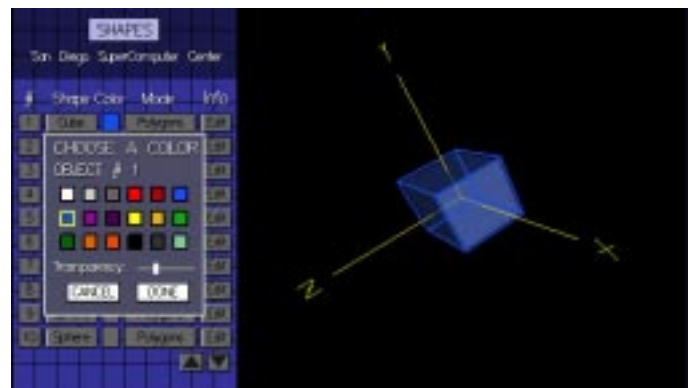
The third button in an object's button row appears in the color of the object's material properties. To edit the color of the object, click the button and choose a new color from the available colors. A yellow box is drawn around the currently chosen color if the current color appears in the color menu. If Show Selections is active, a wireframe highlight of the same color of the object is drawn around the object in the 3d scene.

Transparency of an object can also be set in the Color menu. The more transparent an object is, the more you can see through it, like glass. By default, transparency is set to zero, making the object appear completely solid. Moving the transparency slider to the right makes it more transparent. A completely transparent object appears practically invisible.

Click Done when satisfied with the new color and transparency settings, or Cancel to revert to the last confirmed settings.



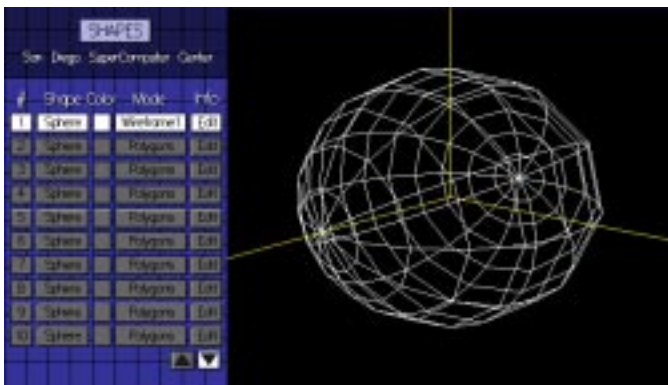
Color Menu



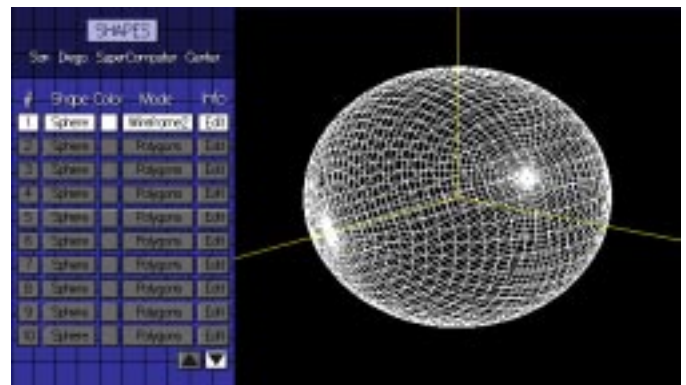
Transparency Example

## Editing the Polygon Mode

Each object has a polygon mode. The mode is set to polygons by default, meaning the object appears to be a set of solid surfaces. The other main mode is wireframe, where the construction framework of the object is shown as a wire mesh. Two wireframe modes are available, the first being a set of wires in low resolution mode while the second wireframe mode is a wireframe set in high resolution mode. Wireframe modes are unaffected when toggling the Hi-Res Mode option on or off in the features menu, and are controlled instead by setting the polygon mode of the object. Cubes only have one wireframe type available.



Wireframe1 (Lo-Res)



Wireframe2 (Hi-Res)

# Object Editing

## Editing from the Object Editing Palette

### Accessing the Object Editing Palette

To turn on the object editing palette, click the Edit button on the button row of the object you wish to edit. Then the editing palette will appear in front of the main object palette. Several editing features will now be available.



## Sliders

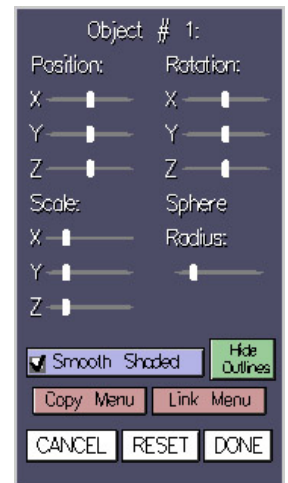
### Positioning the Object

The object can be positioned relative to the X, Y, and Z axes by using the position sliders for each axis. Sliding to the right moves the object along the chosen axis in the positive direction, while sliding to the left moves the object along the axis in the negative direction.

Note: Spheres and Cubes have their position defined from the center of the object, while cone and cylinder positions are defined at the base of the object.

### Rotating the Object

Each object can be rotated along the three major axes as well. The rotation sliders range from -180 degrees to 180 degrees. Rotations occur in the following order: rotation about the x-axis, rotation about the y-axis, then rotation about the z-axis. Note that rotations are made about the center of the object's spatial location.



### Object Scale

The default shape of an object can be manipulated using the Object Scale sliders. These define the multiplication of the object's dimensions along each of the three major axes and are independent of each other. Please note that object scale is considered before the rotation of the object.

### Object Attributes

Each object type has a particular set of attributes that can be adjusted. Cubes and Spheres have a uniform radius that can be manipulated, while Cones and Cylinders have base radius and height length that can be adjusted. These Object Attributes are multiplied by the Object Scale sliders to create the object's final dimensions.

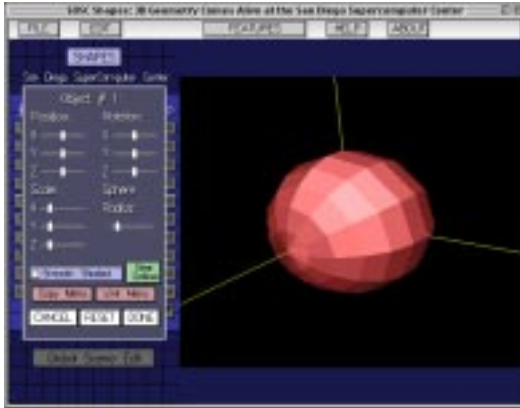
# Object Editing

---

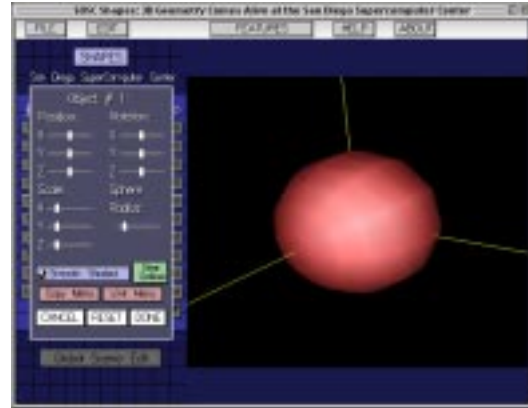
## Other Object Editing Features

### Shading

Each rounded type of object (sphere, cone, cylinder) is composed of a number of facets that make up a round face. When smooth shading is not enabled, these facets are displayed as flat surfaces. When smooth shading is on, the facets are lit as if the object were round. This is easier to see than to explain. Notice the mode settings below and the difference that smooth shading makes, however the edges of the facets are still noticeable when there are few facets.



**Smooth Shading Off**



**Smooth Shading On**

### Show/Hide Outlines

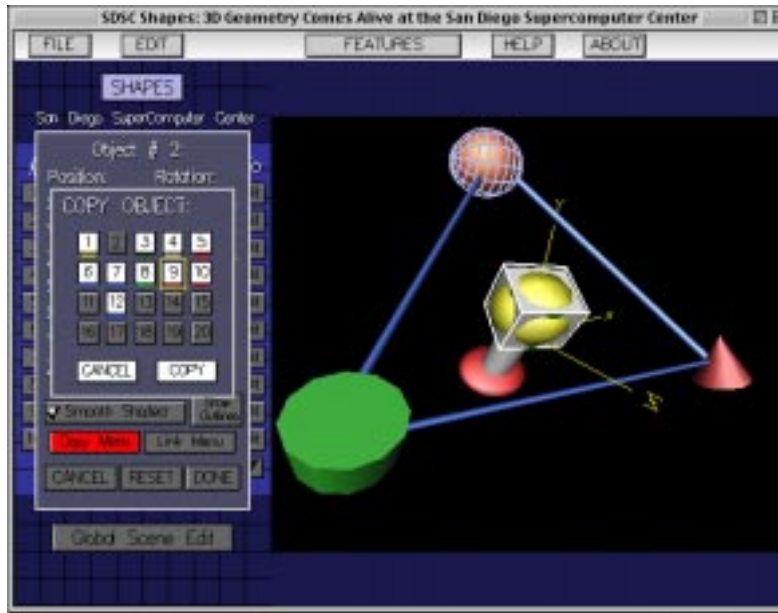
This is the same feature that is toggleable from the Edit Menu, and turns on/off the wireframe object highlight that surrounds the current object being worked on.

### Copy Menu

This feature allows an object to copy all of the attributes that another object has. For example, say you want to build two wheels of the exact same size and dimension, to place on a car. You could first build one cylinder and mold it to the desired shape. Then you could duplicate it and move the duplicate to the other side of the vehicle. Duplicating an object copies the original object's shape type, color, polygon mode, xyz position, xyz rotation, xyz scale, object shape attributes, and shading.

To use this feature, first click on "Copy Menu" in the Object Edit Box window. A listing of 20 objects show up, but some are grayed out and unselectable. The remaining object numbers are colored according to the object colors in order to assist in locating the desired original object to copy. Clicking on an object will select it to be the desired original object. The target original is highlighted in blue and the current object is highlighted in white. Clicking "Copy" will finalize the duplication. The current object will duplicate the original object's attributes and occupy the same space as the target original.

# Object Editing



## Copy Menu Example

In the above diagram, Object #9, the orange sphere, is the object that will be copied. Note the blue highlight designating it as the target to copy from. Object #1, which is currently a white cube, is the target to copy into, which is highlighted in white.

Several objects may be grayed out and uncopyable for the following reasons.

1. You can only copy an active object.
2. You cannot make an object copy itself.

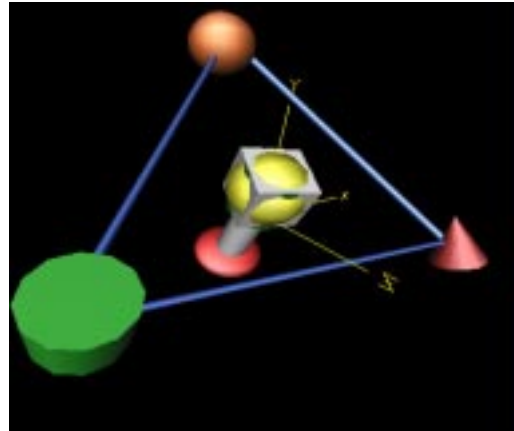
## Advanced Feature: Link Menu

All objects are placed and rotated about their center point. However, if multiple objects need to rotate together, like a head with a hat on it, there is no grouping feature. Instead, we create hierarchical link structures. First click on the "Link Menu" button in the Object Edit Box window. A similar window to the Copy Menu appears.

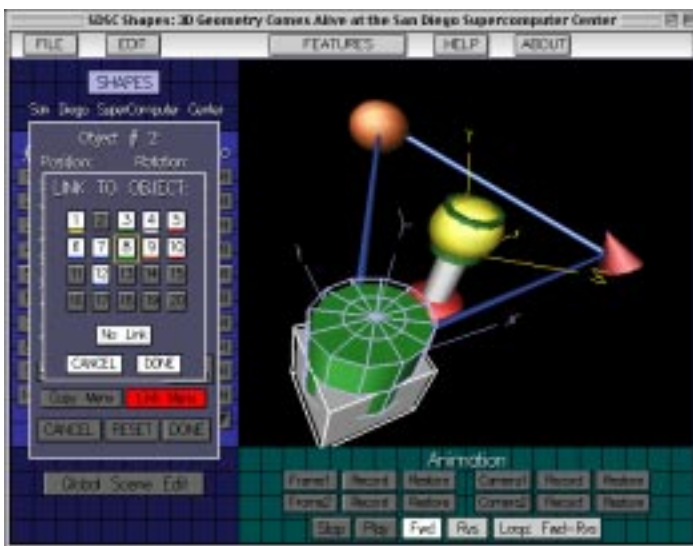
Several objects may be grayed out and unlinkable for the following reasons.

1. You can only link to active objects.
2. You cannot link an object to itself.
3. You cannot link an object to any object hierarchy that includes itself. (i.e. 1 links to 5, 5 links to 7. 7 cannot link back to 1 or 5.)

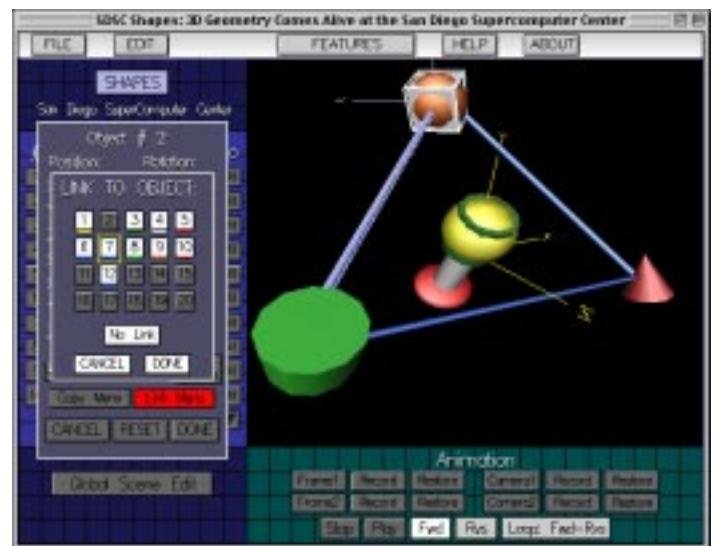
# Object Editing



Original Scene



Object 1 linked to Object 8



Object 1 linked to Object 7

An object that is linked to another object does not use the default axes (located at 0,0,0) as a reference point. Rather, if object a links to object b, then object b's position and rotation settings create a new set of axes for object a to use as xyz position 0,0,0. This is more confusing in words than in pictures. Note the diagrams above. The first image shows the basic scene we are working with. Object #1 is the white cube in the center of the screen. We then link to the green cylinder. The green cylinder is then highlighted in blue, with a new set of blue axes created to show the new reference point axes. The third diagram shows where the white cube would be placed along with the new set of axes when the cube links to the orange sphere instead. The blue axes will always show the relative reference point of the current object.

# Global Editing

## Global Scene Editing

All of the objects in the entire scene can be manipulated in a number of ways. This feature groups all objects together and operates on them as a single group. This can be used to approximate a better view of the objects or to view the scene in a different manner. To use Global scene Editing, click on the Global Scene Edit button located at the bottom of the main modeling panel window.

### Sliders

Position, rotation, and scale can all be set globally in the Global Scene Edit menu, affecting all objects.

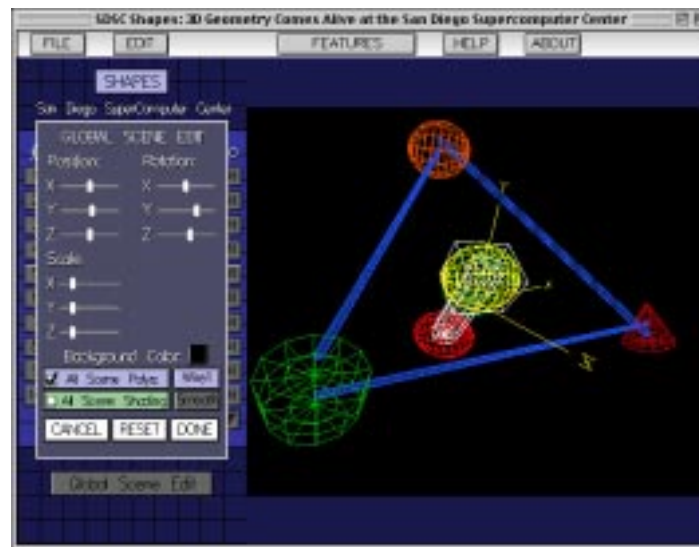
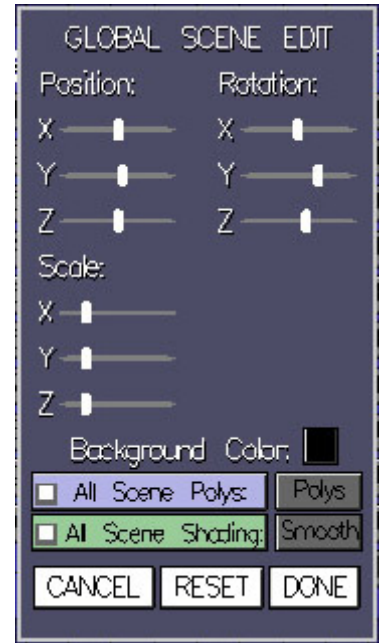
### Background Color

The color of the background (default being black) can be set in the Global Scene Edit menu by clicking on the current background color box. Background color can be set similarly to how object colors are set, except that there is no transparency feature in the background color menu.

### All Scene Polygons

Overrides polygon settings for all polygon shapes to Polygon, Wire1, or Wire2. Polygon will act as if all objects are set to "Polygon" for polygon mode. Wire1 acts as if all objects are set to "Wireframe1" for polygon mode, which uses low resolution (fewer) wires. Wire2 acts as if all objects are set to "Wireframe2" for polygon mode, which uses high resolution (more) wires.

To use, first turn on All Scene Polys in the Global Scene Edit menu. This will turn on which polygon settings you want to apply. Click on the polygon setting button to cycle through the options. Clicking on All Scene Polys again will turn the feature off and restore individual object polygon settings.



All Scene Polys set to Wire1

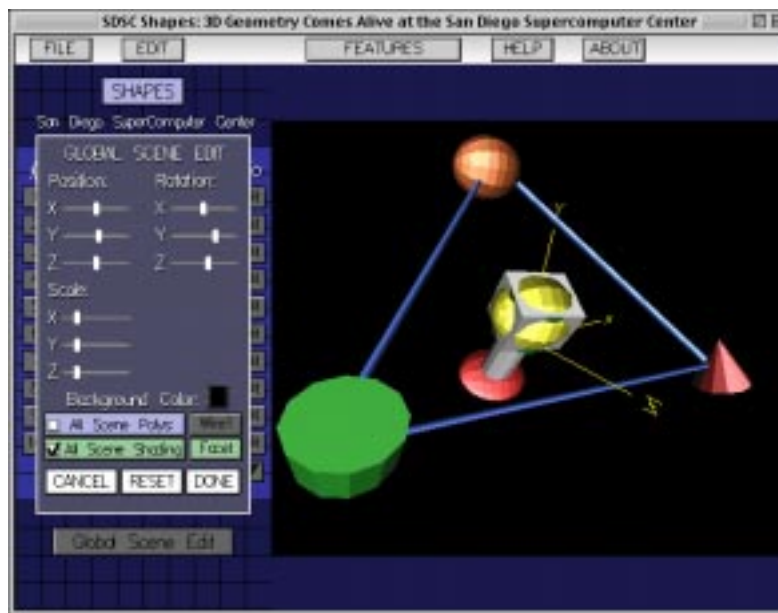
# Global Editing

---

## All Scene Shading

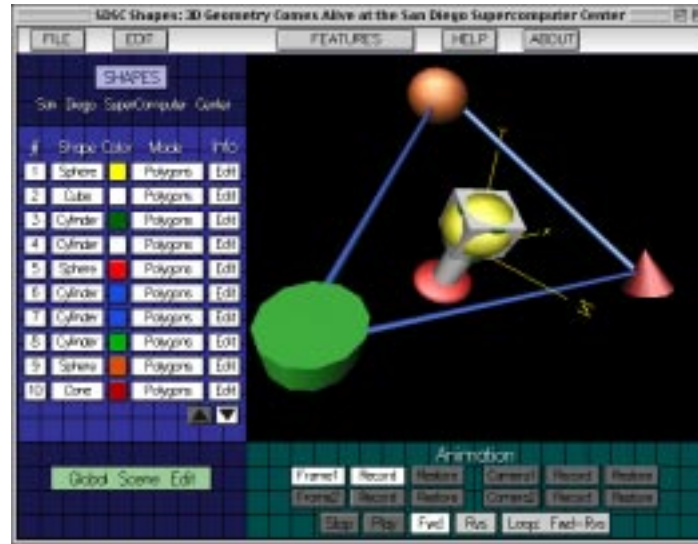
Overrides shading settings for all polygon shapes to either Smooth or Facet. If Smooth is selected, the scene appears as if all objects have Smooth Shading turned on in the Object Edit Box Menu. If Facet is selected, the scene appears as if all objects have Smooth Shading turned off in the Object Edit Box Menu.

To use, first turn on All Scene **Shading** in the Global Scene Edit menu. This will turn on which shading settings you want to apply. Click on the shading setting button to toggle between the options. Clicking on All Scene **Shading** again will turn the feature off and restore individual object shading settings.



All Scene Shading set to Facet

# Animation



You can record two frames and/or camera angles and animate between them. To use this feature, Animation must be active in the Features Menu.

## Animation Types

You can animate between different camera angles or different frames in any combination. This means your animation can consist of:

- Two camera angles and two frames of animation
- One camera angle with two frames of animation
- Two camera angles with one frame of models

An animation must have at least two camera angles or two frames active. To activate a frame or camera angle, click on the button that states the name of the frame, i.e. "Frame1 Off".

## Animating Frames

A frame is the state of all 20 Objects, including the Global attributes. In the animation panel, you first have to turn on the frame you wish to be active. Find a model set you like, then hit the Record button next to the frame's name. Restore loads back the frame that you recorded there. When you have two frames, you can play the animation between them by hitting the Play button.

## Animating Camera Angles

A camera angle is defined by the current rotation and zoom viewpoint. In the animation panel, you first have to turn on the camera you wish to be active. Find a camera angle view that you like, then hit the Record button next to the camera angle's name. Restore loads back the angle that you recorded there. When you have two camera angles, you can play the animation between them by hitting the Play button.

## Looping

Animations can be played in forward order, reverse order, or looped. Looped animation allows for the animation to repeat in forward order (Fwd-Fwd), reverse order (Rvs-Rvs), or alternating back and forth between them (Fwd-Rvs). Click on the Loop:... button next to the Rvs button to turn on the Loop setting. Click on the Loop button again to change the Loop setting. Click Play to watch the loop, then click Stop when finished. Clicking on the Fwd or Rvs buttons will deactivate the Looping.